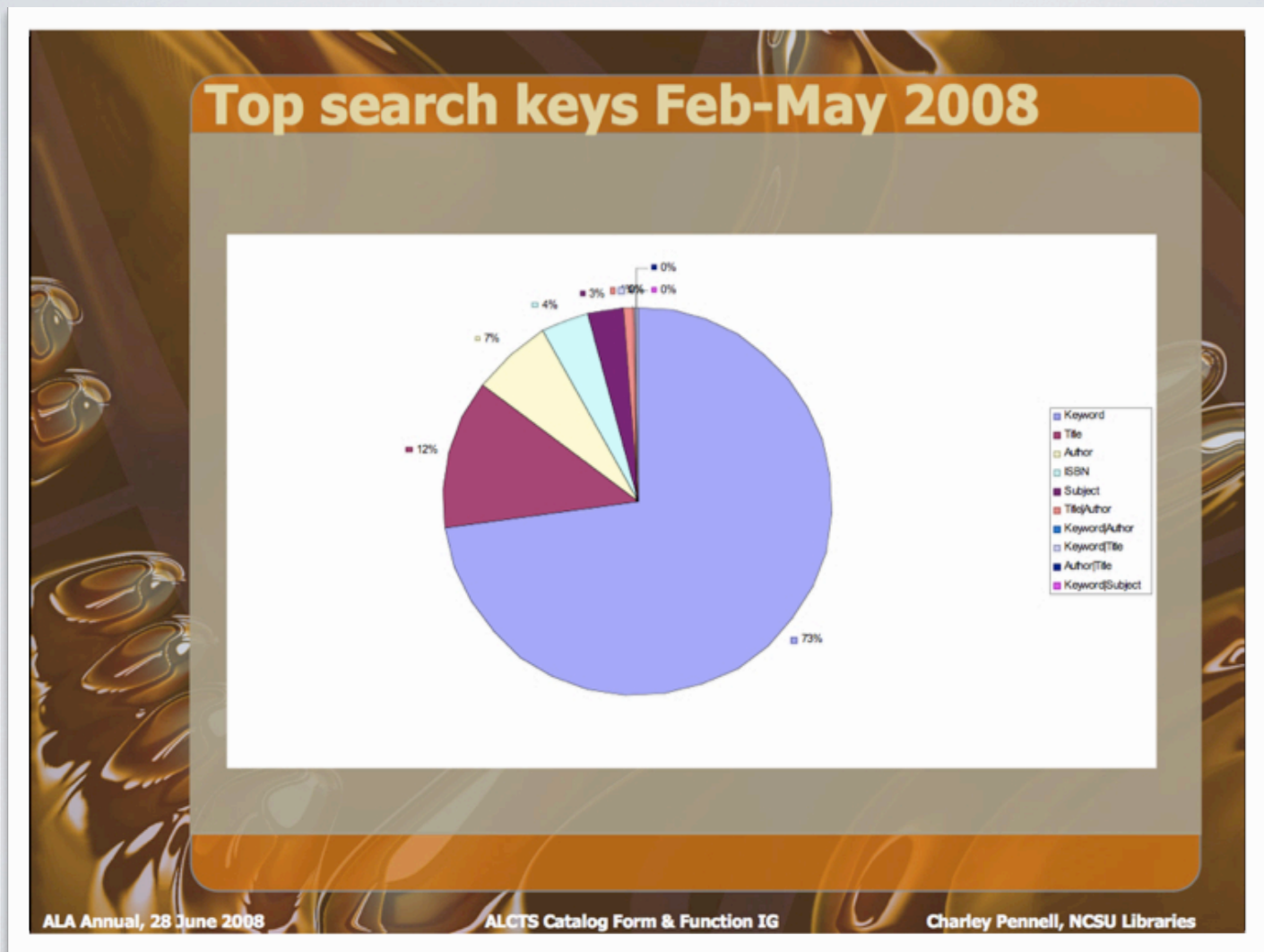


THE DASHBOARD INITIATIVE

a terrific data management tool

tool data



projects

- fedora
- easyBorrow
- djatoka
- mobileLibrary
- federated searching
- etc.

data farm

The screenshot shows a web browser window titled "Penn Library Data Farm" with the URL <http://metrics.library.upenn.edu/prototype/datafarm/>. The page features a navigation bar with links: "About the Data Farm", "Shared File Depository", "Vendor Statistics", "Related Sites", and "Staff Web". The main header includes the "Data Farm" logo and "University of Pennsylvania Library". A yellow box highlights "Penn Library Facts 2007".

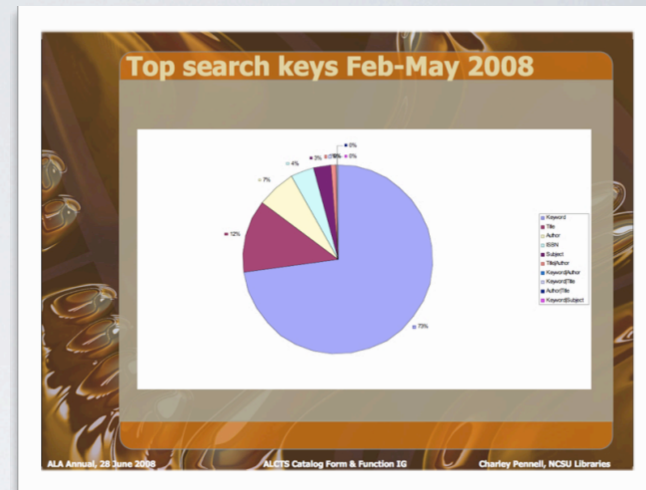
Tools and Data

E-resource Tracking (use measures for e-journals, databases, and other electronic resources)	Research & Instructional Services
Counter Data	Annual Data Collection
Gate Counts	2004 Library Quality/Impact Survey
Photocopier & Printer Use	2002 Library Quality/Impact Survey
Image Collection Use (down pending log changes)	Graduate Student Workshops
BorrowDirect Data Repository	Annual Survey of Who Asks Questions Where
EZBorrow Data Repository	Library Staff Census (under construction)
Public Web Log Analytics (down pending log changes)	

Voyager Reports

- [Voyager Funds - Report Builder](#)
- [Circulation | Collection Management Reports](#)

Report: Items with no circulation since the introduction of Voyager. Available for specific locations and classifications



data silo



dashboard idea

- unified data vision
- automated data-farm starting point
- 'current flow'

car dashboard



car dashboard

- monitors crucial car systems
- current-status key
- detail bad – overview good

library dashboard

- monitors crucial library systems
- current-flow primary focus
- one piece of data-management solution
- expandable data-management piece

web switch

- widget link
- dashboard link
- dashboard admin link

updating widgets

- get date-range
- run-query
- post info
- **no changes** to dashboard/widget
- automator: any language

library dashboard

- useful 'current flow' info
- unified data vision
- automated data-farm starting point
- campus-wide interconnections

more info

- library.brown.edu/dashboard/

